



## Horizon Laser Technology Co., Ltd

Add: 6th Floor, No.4 Building, Huidongsheng Industrial Park,  
No. 1028 Guangqiao Avenue, Yutang Street, Guangming District,  
Shenzhen 518107, China

Tel : +86 15013595903 +86 18823836110

Email :info@horizonlaser-tech.com

sales@horizonlaser-tech.com

Website : www.horizonlaser-tech.com

## HAI ANH CONSTRUCTION AND INSTALLATION & TRADING LIMITED COMPANY

Add: Number 21, block 10, Xa La urban area, Phuc La ward,  
Ha Dong district, Ha Noi city, Viet Nam.

Tel: (84) 913209856

Email: Haianhelectric@gmail.com.

website: www.horizonlaser.vn



# HORIZON LASER

[www.horizonlaser-tech.com](http://www.horizonlaser-tech.com)



# CONTENT

## LASER WELDING MACHINE

ROBOTIC LASER WELDING .....	02
MULTI-AXIS PLATFORM LASER WELDING MACHINE .....	04
AIR-COOLED HANDHELD LASER WELDING MACHINE .....	06
WATER-COOLED HANDHELD LASER WELDING MACHINE .....	08

## LASER CLEANING MACHINE

TIRE MOLD LASER CLEANING WORKSTATION.....	10
AIR-COOLED PULSE LASER CLEANING MACHINE.....	12
WATER-COOLED PULSE LASER CLEANING MACHINE .....	14
SHOE MOLD PULSE LASER CLEANING MACHINE.....	16
BACKPACK PULSE LASER CLEANING MACHINE .....	17
PORTABLE PULSE LASER CLEANING MACHINE .....	18
CONTINUOUS LASER CLEANING MACHINE.....	19

## LASER CUTTING MACHINE

SINGLE-PLATFORM LASER CUTTING MACHINE .....	20
EXCHANGE PLATFORM LASER CUTTING MACHINE.....	22
PIPE LASER CUTTING MACHINE.....	24
PLATE & PIPE INTEGRATED LASER CUTTING MACHINE.....	25
LARGE FORMAT GROUND-RAIL FIBER LASER CUTTING MACHINE .....	26
PRECISION LASER CUTTING MACHINE .....	27

## LASER MARKING MACHINE

FIBER LASER MARKING MACHINE .....	28
UV LASER MARKING MACHINE.....	30
HANDHELD LASER MARKING MACHINE.....	32
CCD VISION LASER MARKING MACHINE.....	34
FLYING LASER MARKING MACHINE .....	36

### Company profile

Horizon Laser Technology Co., Ltd is a new high-tech enterprise integrating technical services, technology promotion, laser equipment modular design, sales and integration services. Horizon Laser has many senior technical experts (Covering machine tool design, optics, automation integration, laser process development) from well-known laser companies. Horizon laser is mainly committed to promoting laser processing technology, popularizing laser applications, and reducing the asymmetry of client information through modular sales and integration services of laser equipment, and strives to achieve an satisfaction for customers to buy and use.

### Company main business

laser cutting, laser welding, laser cleaning and other laser equipment design, cost-effective OEM integration, pre-sale, on-sale and after-sale technical services.

### Business philosophy

Eliminate industry information barriers and sincerely serve customers;

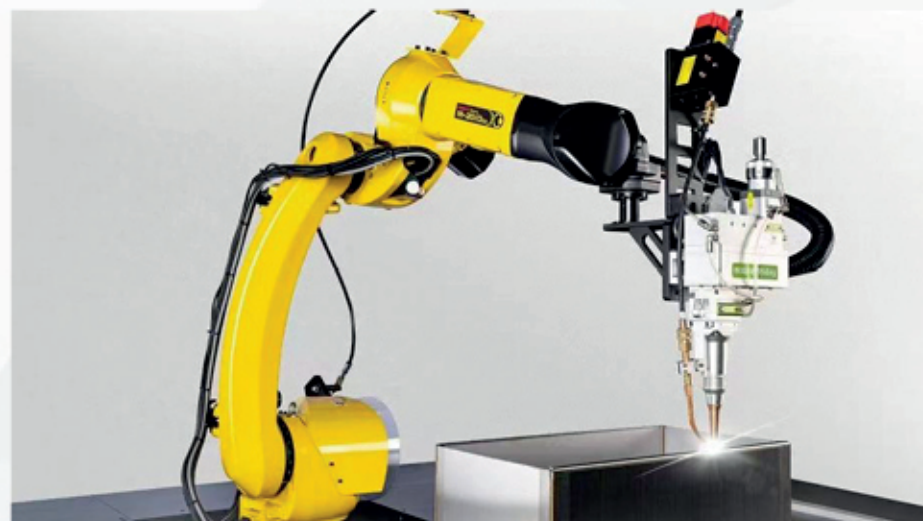
Customized equipment integration to create new retail with ultra-high cost performance;

Fully transparent display of materials, conscientiously make new domestic products;

Senior experts provide one-to-one guidance, accurately match the needs, and don't spend any extra money.



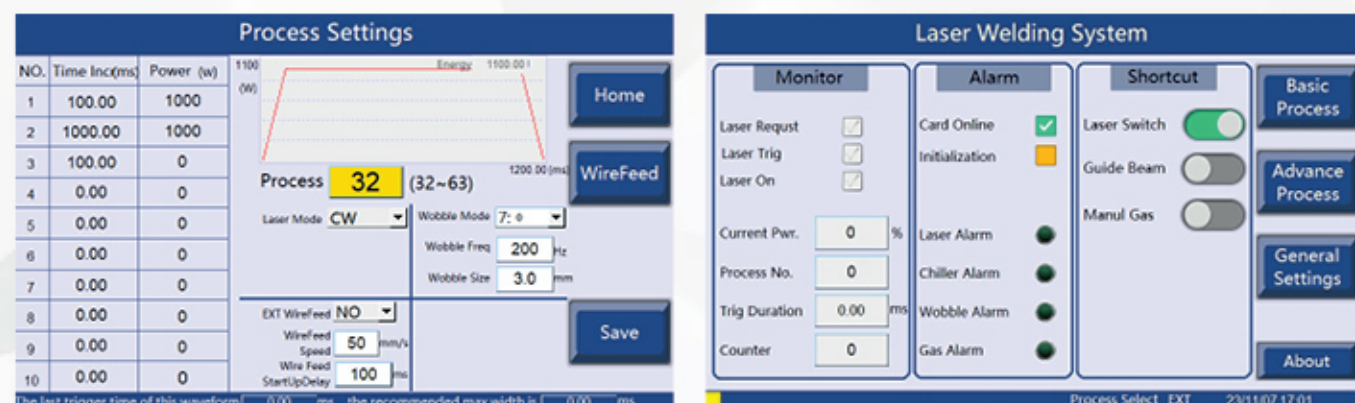
## ROBOTIC LASER WELDING



### Features

1. The manipulator does not need a laser signal module, and the direct IO signal communicates with the welding machine handshake.
2. There are 64 sets of welding process waveforms, which are stored and recalled for welding requirements of different parts of the product.
3. The welding machine integrates functions such as laser control, swing welding head, wire feeding, and air pressure detection.
4. Realize offline multi-document welding processing to avoid incorrect welding caused by computer card machine.
5. Multi-signal closed-loop transmission of laser, laser control unit and manipulator, safe and reliable.

### Operation Interface



### Technical Parameters

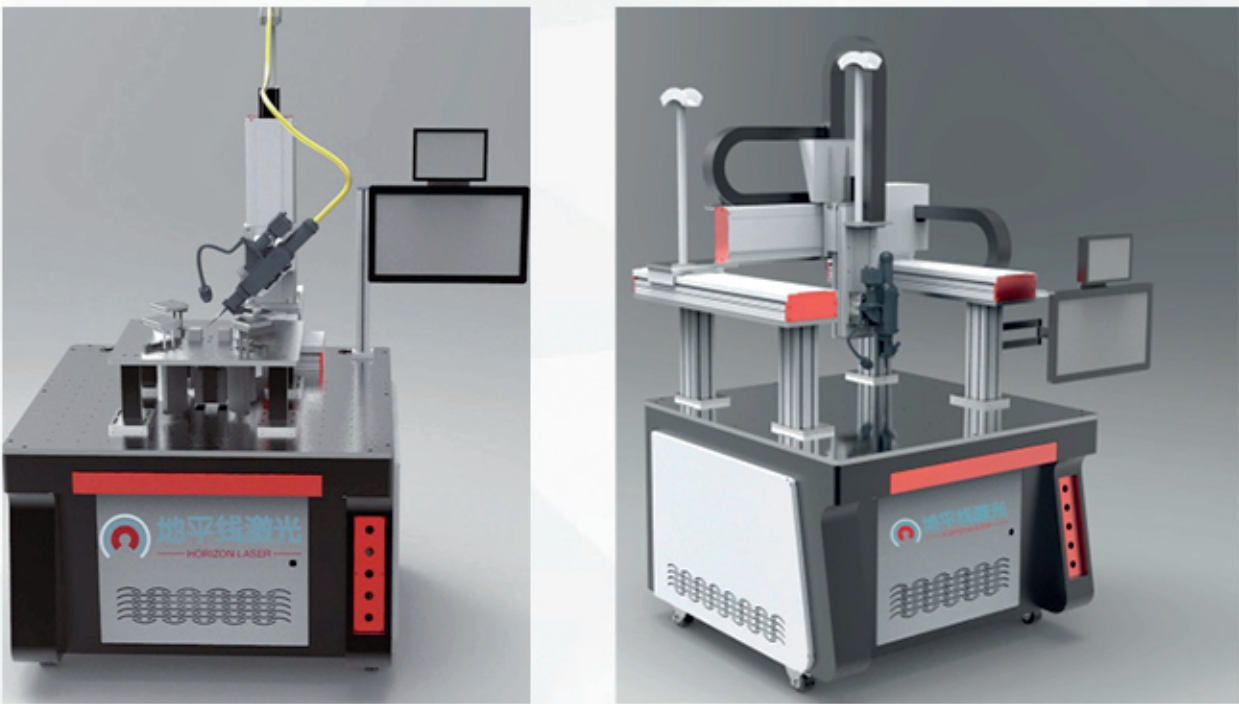
Laser Power	1000-12000W
Robot	6 axis (multi-brand optional), Reach: 1500-2600 mm Load: 12-50 kg
Welding Head	Conventional welding head、Galvanometer type swing welding head
Process Waveform	64 groups (IO port call)
Waveform Function	Laser power, pulse width, start and end arc control, swing length, swing type, wire feed
Optional	Additional Axis, Positioner, Weld Seam Tracking, Visual Positioning, Push-Pull Wire Feeding, Robot Loading/Unloading, Tooling Fixtures, Welding Enclosure, Dust Extraction System, Human Detection & Light Curtain Safety Systems

### Application





# MULTI-AXIS PLATFORM LASER WELDING MACHINE



## Product introduction

Multi-axis laser welding machine controls the movement of the welding head through multiple motion axes, realizes multi-track welding of complex products, and is suitable for application scenarios with high welding precision and batch product processing. It is widely used in lithium battery industry, 3C industry, kitchen and bathroom industry.

## Features

- 1. Servo motor is matched with reducer to realize high-speed and large-torque movement.
- 2. Simultaneous multi-axis linkage can fit a variety of welding trajectories, which is suitable for product welding with multiple trajectory weld passes.
- 3. The matching material tray can realize large-scale and batch one-time welding; the open IO handshake interface can be processed with automated production lines.

## Technical Parameters

Laser Power	1000-6000 W
Motion Axis	4-Axis (3-Axis, 5-Axis, 6-Axis Optional), Rotation Axis
Welding Head	Conventional welding head、Galvanometer type swing welding head
Welding Mode	Continuous Welding (Sealed Welding, Stitch Welding, Tailor Welding, Fillet Welding), Spot Welding
Processing Range	Length, Width and Height: 200-900 mm (Larger Size Can Be Customized)
Drive Method	Servo Motor (Linear Motor Optional)
Repeatability	±0.03 mm

## Application





# AIR-COOLED HANDHELD LASER WELDING MACHINE



## Features

- 1.Air-cooled: More Energy-Efficient, Maintenance-Free, Compact Structure, Portable and Mobile.
- 2.Four-in-one application: Welding, Non-Contact Cleaning, Weld Seam Cleaning, Cutting.
- 3.Subvert traditiona: 4 times faster than argon arc welding.  
One-Pass Forming: Strong Welding, Smooth Weld Bead.
- 4.Safe and Reliable: Safety Interlock, Shutter, Enable, Multiple Protection Measures.
- 5.Long Lifespan: 100,000 Hours of Lifespan, Worry-Free Usage.

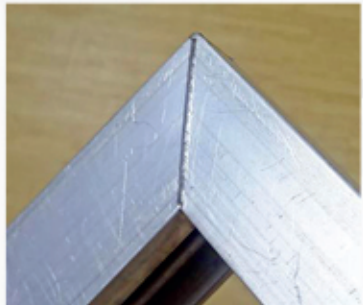
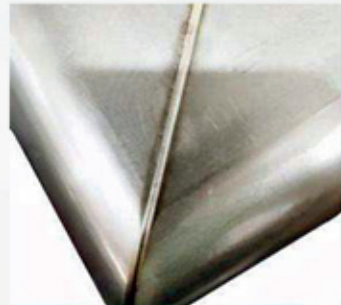
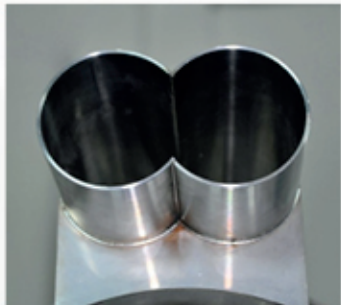
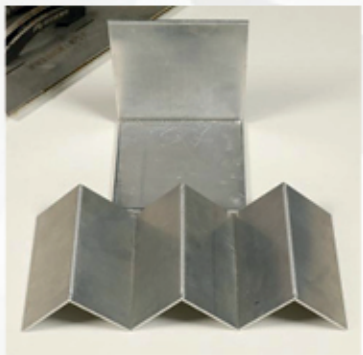
## Welding performance

Device model	DPX-A800	DPX-A1200	DPX-A1500	DPX-A2000
Stainless steel	≤ 2.5mm	≤ 3.5mm	≤ 4.0mm	≤ 6.0mm
Low-carbon steel	≤ 2.5mm	≤ 3.5mm	≤ 4.0mm	≤ 6.0mm
galvanized sheet	≤ 1.5mm	≤ 2.5mm	≤ 3.0mm	≤ 5.0mm
Aluminum alloy	≤ 1.5mm	≤ 2.5mm	≤ 3.0mm	≤ 4.0mm
Brass	≤ 1.5mm	≤ 2.5mm	≤ 3.0mm	≤ 4.0mm

## Technical Parameters

Device Model	DPX-A800	DPX-A1200	DPX-A1500	DPX-A2000
Laser Type	Continuous Fiber Laser (Wavelength 1080±3 nm)			
Rated Output Power	800W	1200W	1500W	2000W
cooled Method	Air cooled			
Power Adjustment Range	10% - 100%			
Adjustable Weld Width	0 - 8 mm			
Welding Gun Cable Length	10m			
Welding Gun Weight	0.75 kg			
Product Size(L*W*H)	543 × 325 × 580 mm			760 × 360 × 600 mm
Total Weight	32 kg	32 kg	36 kg	44 kg
Power Consumption	< 2.5 kW	< 3.7 kW	< 4.6 kW	< 6.1 kW
Operating Voltage	Single Phase 220 VAC			
Safety Features	Safety ground lock: Only when the welding gun touches the workpiece can the light emission be controlled; Gas detection: If the gas bottle is not opened or the gas flow is low, the software will alarm; Welding gun firing button and laser shutter, double safety light output.			

## Application





## WATER-COOLED HANDHELD LASER WELDING MACHINE



### Features

1. Welding speed is 4 times faster than argon arc welding.
2. One-time welding forming, smooth welding bead, no need for grinding.
3. Basically no consumables, standardized use, the protective lens can be used for several weeks.
4. You can get started in 4 hours and become skilled as an professional welder in one day.
5. Comes with air pressure detection alarm to avoid damage to the welding torch.

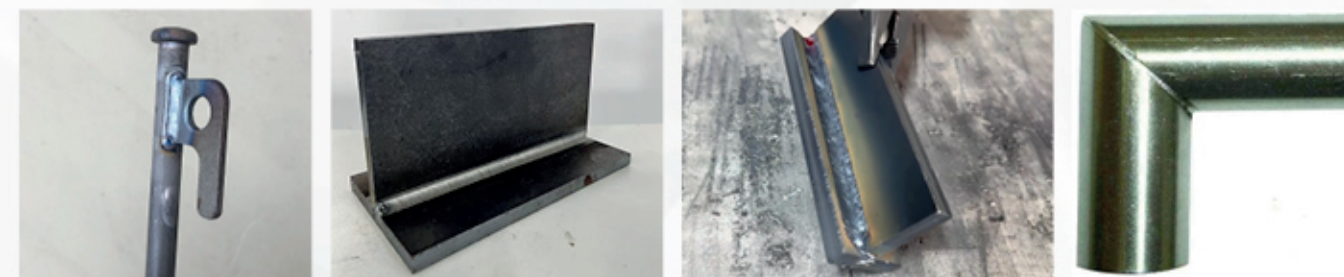
### Welding performance

Device model	DPX-W1500	DPX-W2000	DPX-W3000	DPX-W6000
Stainless steel	≤ 4.0mm	≤ 6.0mm	≤ 8.0mm	≤ 12.0mm
Low-carbon steel	≤ 4.0mm	≤ 6.0mm	≤ 8.0mm	≤ 12.0mm
galvanized sheet	≤ 3.0mm	≤ 5.0mm	≤ 6.0mm	≤ 8.0mm
Aluminum alloy	≤ 3.0mm	≤ 4.0mm	≤ 5.0mm	≤ 6.0mm
Brass	≤ 3.0mm	≤ 4.0mm	≤ 5.0mm	≤ 6.0mm

### Technical Parameters

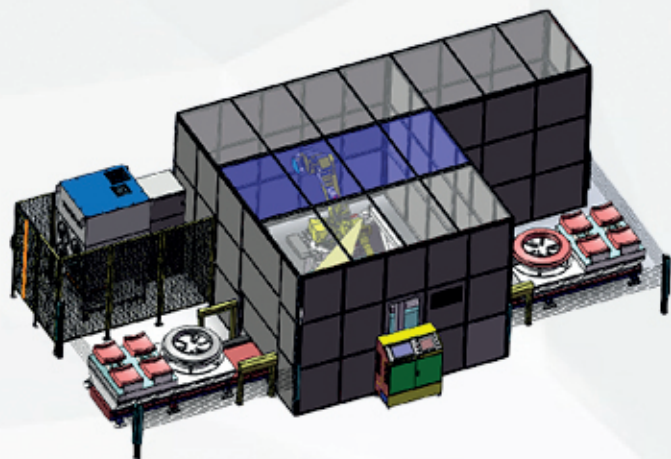
Device model	DPX-W1500	DPX-W2000	DPX-W3000	DPX-W6000
Laser type	Continuous fiber laser (wavelength 1080±3nm)			
Rated output power	1500W	2000W	3000W	6000W
cooled method	Water cooled			
Power adjustment range	10% ~ 100%			
Adjustable weld width	0~8mm			0~12mm
Welding gun cable length	10m		20m	
Welding gun weight	0.75kg			1.3kg
Product Size(L*W*H)	980*550*720mm		980*650*920mm	1155*685*1250mm
Total Weight	98kg	103kg	170kg	206kg
Machine power consumption	<6.7kw	<8.4kw	<13kw	<26.5kw
Operating Voltage	Single phase three wire 220VAC		Three-phase five-wire 380VAC	
Safety light system	Safety ground lock: Only when the welding gun touches the workpiece can the light emission be controlled; Gas detection: If the gas bottle is not opened or the gas flow is low, the software will alarm; Welding gun firing button and laser shutter, double safety light output.			

### Application





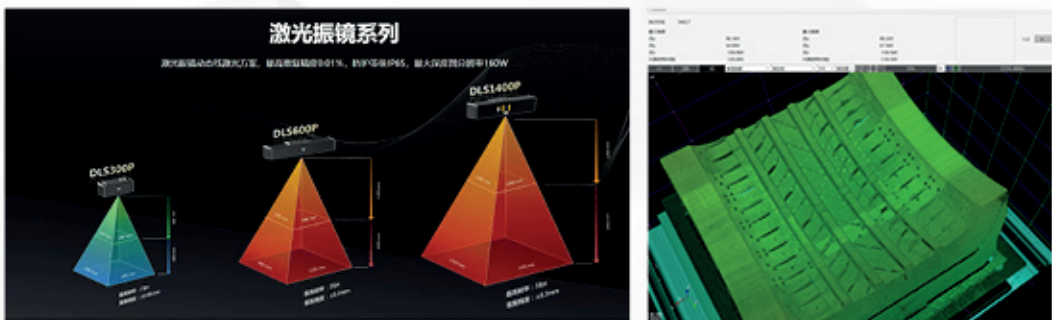
# TIRE MOLD LASER CLEANING WORKSTATION



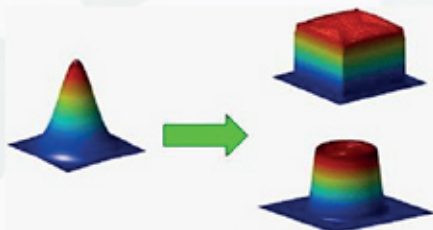
## Features

1. Dual workstations (left and right) with same-side loading/unloading.
2. Station 1 performs cleaning inside the chamber while Station 2 simultaneously handles loading/unloading, maximizing operational efficiency.
3. One-touch start, automatic feeding, and 3D vision for capturing mold coordinates, guiding the robot-equipped laser cleaning head.
4. Dust extraction system collects contaminants in the enclosed chamber, ensuring green cleaning with zero pollution.

## Advantage



3D Vision System

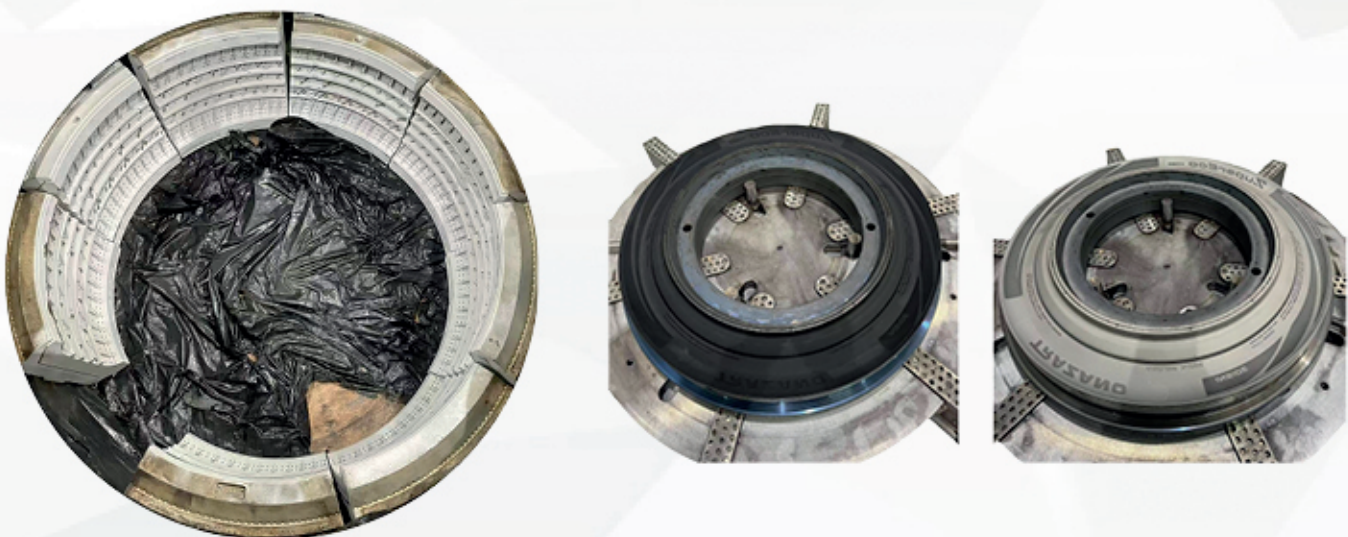


Laser Beam Homogenization

## Technical Parameters

Category	Item	Parameter
Electrical	Power Supply	380V/3-phase/50Hz
	Rated Power Consumption	30kW
Optical	Laser Wavelength	1080nm
	Pulse Laser Power	1000W (optional)
	Cleaning Width	240mm (optional)
3D Vision	Field of View	460-2700mm (optional)
Robot	Reach	2600mm
Mold Compatibility	Pattern Blocks	Compatible Size: 200-450mm
	Sidewall Mold	Compatible Diameter: 500-1300mm
Dimensions	L*W*H	10.7*5.5*3.5m
Safety Protection	Light curtains, AI person detection cameras, safety fences, interlocked doors	

## Application





# AIR-COOLED PULSE LASER CLEANING MACHINE



## Features

- 1. The solution combines a pulsed laser with a dual oscillating mirror cleaning head. Compared to continuous laser cleaning, it features lower heat input, higher peak power, and stronger penetration, making it more suitable for cleaning precision products with delicate and refined results.
- 2.The cleaning head utilizes an ultra-high-speed dual oscillating mirror, enabling more efficient and thorough cleaning.
- 3.The cleaning width can reach up to 150mm @ F300 (100mm @ F254), meeting the requirements for efficient cleaning of large-sized products.
- 4.Dust extraction system collects contaminants in the enclosed chamber, ensuring green cleaning with zero pollution.
- 5.It is capable of cleaning a wide range of materials, including rust, coatings, rubber, paint, resin, oil stains, and more.

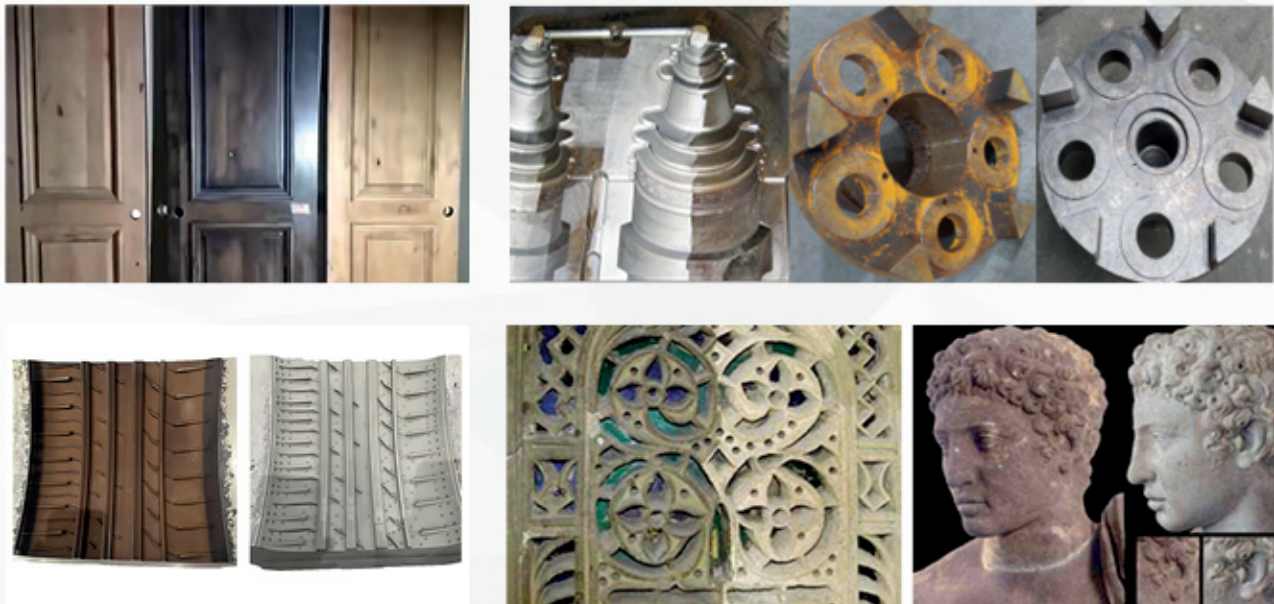
## Cleaning Head



# Technical Parameters

Pulsed Laser Power	100W	200W	300W	500W
Laser Wavelength	1064nm			
Max. Single Pulse Energy	1.5mJ	2&5mJ	2&5&15mJ	1.5&5&15&50mJ
Fiber Cable Length	5m			10m
cooled Method	Air-cooled			
Adjustable Cleaning Width	150mm @ F300, 100mm @ F254			
Cleaning Head Weight	1.3kg			
Dimensions(L*W*H)	413*270*400mm			543*325*580mm
Machine Weight	17-40kg			
Power Supply Voltage	220V (customizable to 110V)			
Rated Power Consumption	0.55KW	0.95KW	1.35KW	2.15KW

## Application





## WATER-COOLED PULSE LASER CLEANING MACHINE



### Features

1. The solution combines a pulsed laser with a dual oscillating mirror cleaning head. Compared to continuous laser cleaning, it features lower heat input, higher peak power, and stronger penetration, making it more suitable for cleaning precision products with delicate and refined results.
2. The cleaning head utilizes an ultra-high-speed dual oscillating mirror, enabling more efficient and thorough cleaning.
3. The cleaning width can reach up to 150mm @ F300 (100mm @ F254), meeting the requirements for efficient cleaning of large-sized products.
4. Dust extraction system collects contaminants in the enclosed chamber, ensuring green cleaning with zero pollution.
5. It is capable of cleaning a wide range of materials, including rust, coatings, rubber, paint, resin, oil stains, and more.

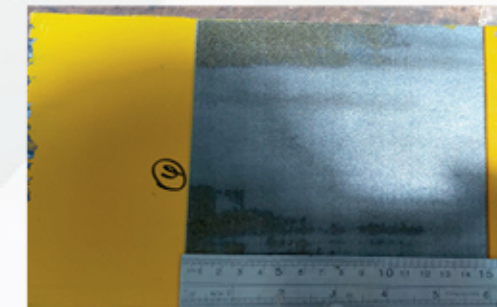
### Cleaning Head



### Technical Parameters

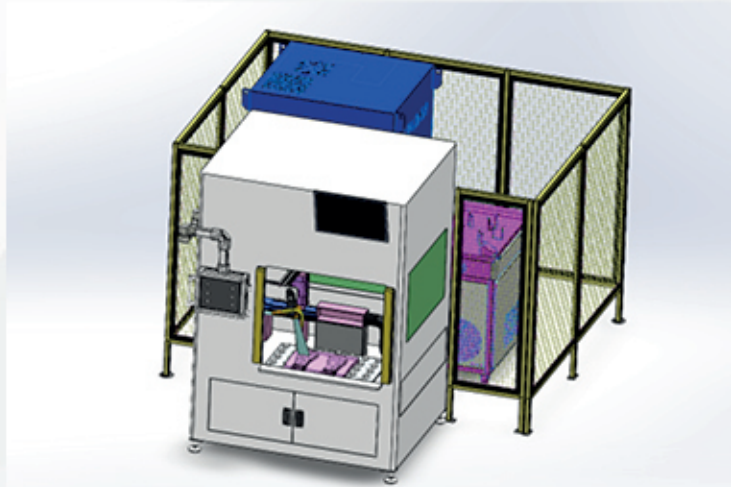
Pulsed Laser Power	500W	1000W
Laser Wavelength	1064nm	
Max. Single Pulse Energy	1.5&5&15&50&100mJ	1.6&5&15&50&100mJ
Fiber Cable Length	10m(customizable 15m)	
cooled Method	Water-cooled	
Adjustable Cleaning Width	150mm @ F300, 100mm @ F254	
Cleaning Head Weight	1.3kg	
Dimensions	L*W*H: 980*550*720mm	
Machine Weight	107kg	
Power Supply Voltage	220V	
Rated Power Consumption	4.15KW	6.2KW

### Application





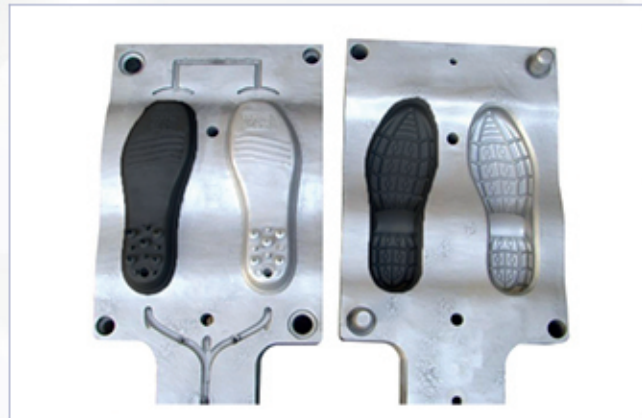
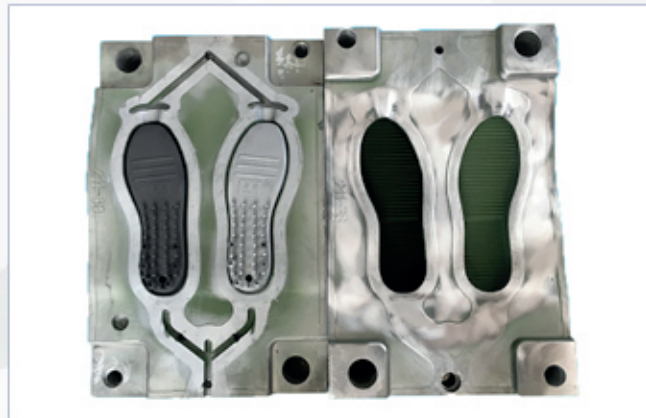
## SHOE MOLD PULSE LASER CLEANING MACHINE



### Technical Parameters

Pulse Laser Power	200W / 300W / 500W (Optional)
Movement mechanism	Gantry motion module or collaborative robot
Cleaning Path Programming	Arch, Circle, Rectangle, etc
Cleaning Range	1200 mm × 900 mm (Customizable)
Power Requirement	Voltage 380V, Power Consumption < 10 KW
Equipment Dimensions (L×W×H)	1.7 × 1.35 × 2.4 m
Safety Protection	Light Curtain, Human Detection Monitoring, Fool-proof & Safety Logic System
Optional Configurations	Dust Extraction System, Protective Fencing

### Application



## BACKPACK PULSE LASER CLEANING MACHINE



### Technical Parameters

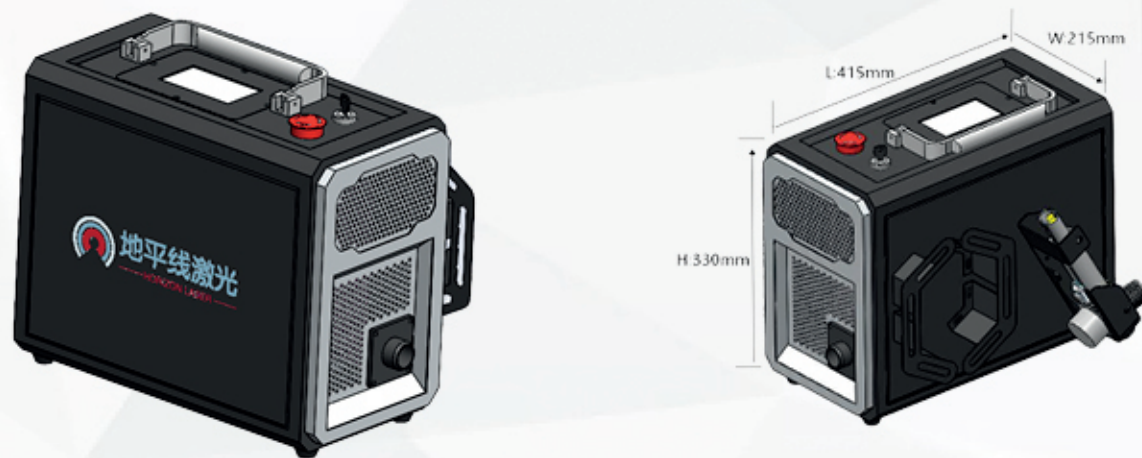
Pulsed Laser Power	100W	200W	300W
Laser Wavelength	1064nm		
Max. Single Pulse Energy	1.5mJ	2&5mJ	2&5&15mJ
Fiber Cable Length	3-5m		
cooled Method	Air-cooled		
Adjustable Cleaning Width	150mm @ F300, 100mm @ F254		
Cleaning Head Weight	1.3kg		
Dimensions	L*W*H: 330*185*420mm		
Machine Weight	15-17kg		
Power Supply Voltage	220V (customizable to 110V)		
Rated Power Consumption	0.55KW	0.95KW	1.35KW

### Application





## PORTABLE PULSE LASER CLEANING MACHINE



### Technical Parameters

Pulsed Laser Power	100W	200W	300W
Laser Wavelength	1064nm		
Max. Single Pulse Energy	1.5mJ	2&5mJ	2&5&15mJ
Fiber Cable Length	3-5m		
cooled Method	Air-cooled		
Adjustable Cleaning Width	150mm @ F300, 100mm @ F254		
Cleaning Head Weight	1.3kg		
Dimensions	L*W*H: 415*215*330mm		
Machine Weight	15-17kg		
Power Supply Voltage	220V (customizable to 110V)		
Rated Power Consumption	0.55KW	0.95KW	1.35KW

### Application



## CONTINUOUS LASER CLEANING MACHINE



### Technical Parameters

Laser power	1500W	2000W	3000W	6000W
Cooling method	Air Cooled/Water Cooled		Water cooled	
Cleaning mode	Continuous cleaning			
Adjustable clean width	300 mm@F800	150 mm@F400		500 mm@F1500
Welding gun cable length	10m		20m	
Cleaning gun weight	0.7/1.25kg			2.2kg
Product size (L*W*H)	980*550*720mm		980*650*920mm	1155*685*1250mm
Total weight	98kg	103kg	170kg	206kg
Machine power consumption	<6.7kw	<8.4kw	<13kw	<26.5kw
Operating voltage	Single-phase three-wire 220VAC		Three-phase five-wire 380VAC	
Safety light emission system	1. Gas detection: The alarm red light will indicate when the gas cylinder is not opened or the gas flow is low. 2. Cleaning gun firing button and laser shutter, double insurance to emit light.			

### Application





## SINGLE-PLATFORM LASER CUTTING MACHINE



### Features

1. A single cutting platform, the overall equipment is compact.
2. The operation panel and the electric control are integrated into one design, independent of the cutting table, and the operation is more convenient.
3. A variety of cutting formats are available to meet the blanking requirements of different sizes of plates.

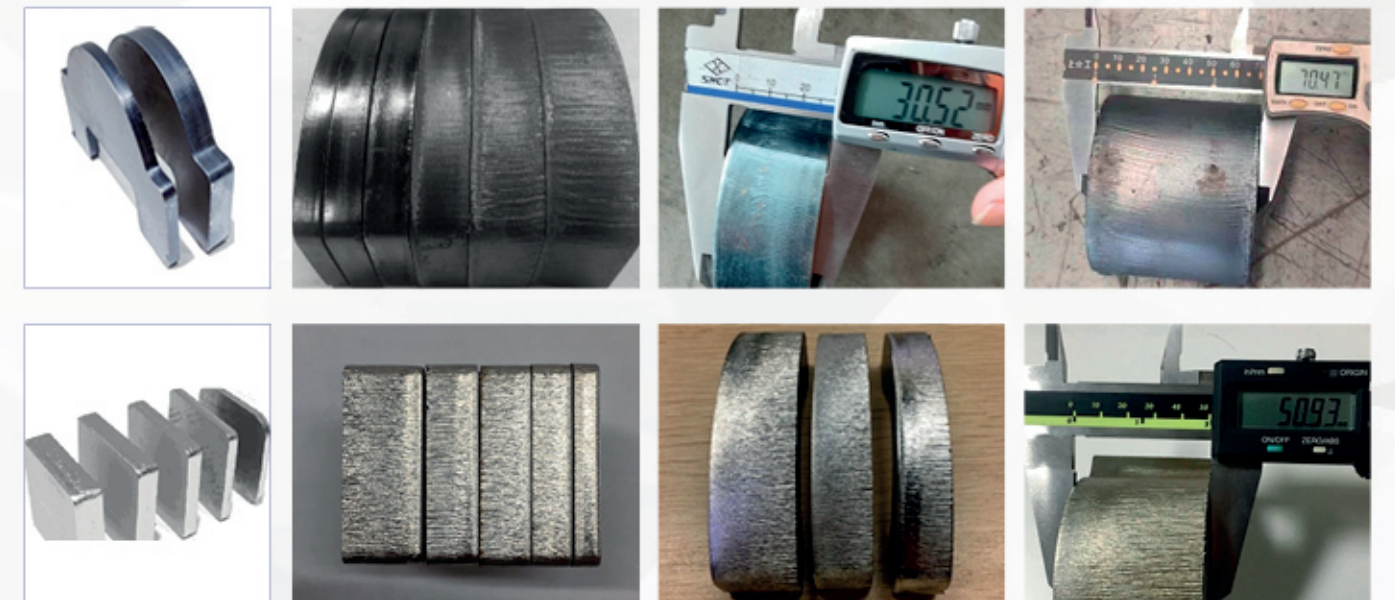
### Technical Parameters

Model	DPX-D3015	DPX-D4020	DPX-D6020	DPX-D8025	DPX-D12025
Working Area	3000 × 1500 mm	4000 × 2000 mm	6000 × 2000 mm	8000 × 2500 mm	12000 × 2500 mm
Laser Power	3KW/6KW/12KW (Optional)		3KW/6KW/12KW/20KW/30KW (Optional)		
Max. Traverse Speed	120 m/min (Interpolated)				
Positioning Accuracy	±0.05 mm				
Repeated Positioning Accuracy	±0.03 mm				

### Cutting performance

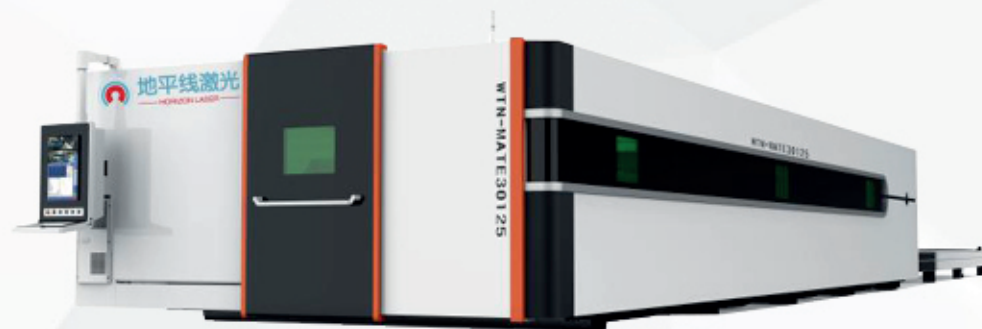
Material	3000W		6000W		12000W		20000W		30000W	
carbon steel	stable cutting	< 18mm	stable cutting	< 22mm	stable cutting	< 35mm	stable cutting	< 45mm	stable cutting	< 60mm
	Limit cut	25mm	Limit cut	30mm	Limit cut	50mm	Limit cut	70mm	Limit cut	80mm
Stainless steel	stable cutting	< 9mm	stable cutting	< 14mm	stable cutting	< 30mm	stable cutting	< 40mm	stable cutting	< 50mm
	Limit cut	12mm	Limit cut	20mm	Limit cut	50mm	Limit cut	80mm	Limit cut	100mm

### Cutting performance





## EXCHANGE PLATFORM LASER CUTTING MACHINE



### Features

1. One-click platform exchange, saving time and energy.
2. Double table design, cutting and loading & unloading can be carried out at the same time, ensuring uninterrupted processing all day long.
3. Full-enclosed protection and segmented follow-up dust removal design create a clean and friendly processing environment.
4. The high-strength bed combined with high-precision dynamic performance is specially designed for high-speed batch cutting of medium and thin plates.

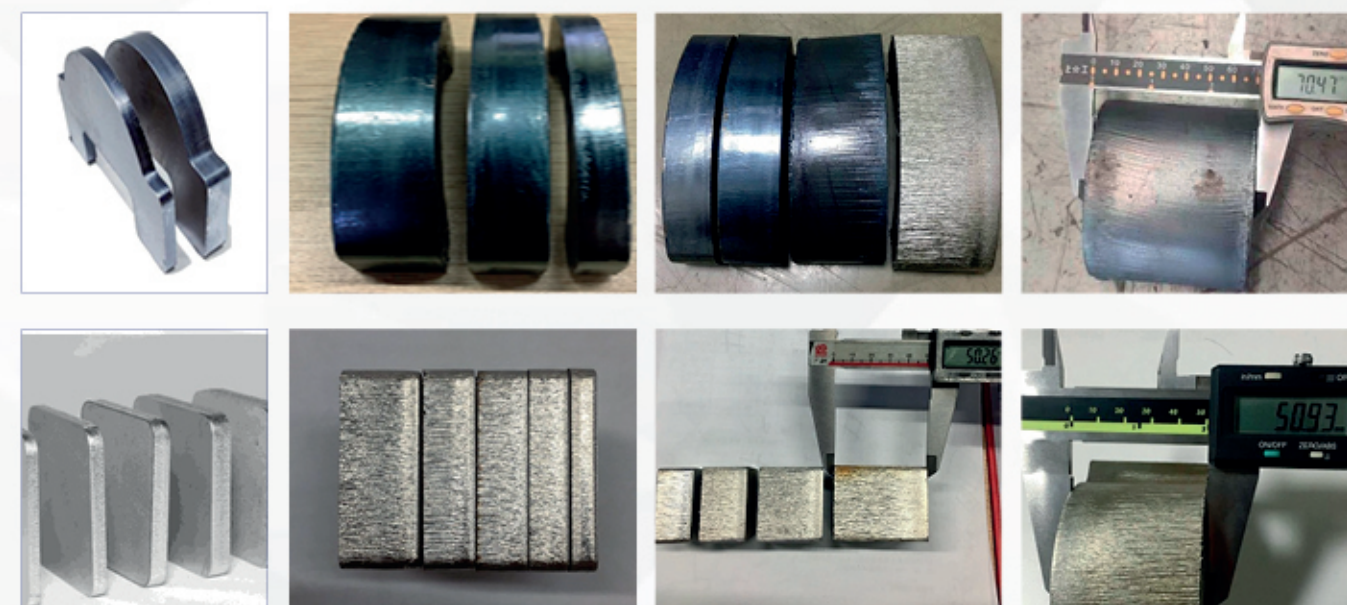
### Technical Parameters

Model	DPX-J3015	DPX-J4020	DPX-J6020	DPX-J8025	DPX-J12025
Working Area	3000 × 1500 mm	4000 × 2000 mm	6000 × 2000 mm	8000 × 2500 mm	12000 × 2500 mm
Laser Power	3KW/6KW/12KW (Optional)		6KW/12KW/20KW/30KW (Optional)		
Max Speed	140 m/min (Interpolated)				
Positioning Accuracy	±0.03 mm				
Repeated Positioning Accuracy	±0.02 mm				

### Cutting performance

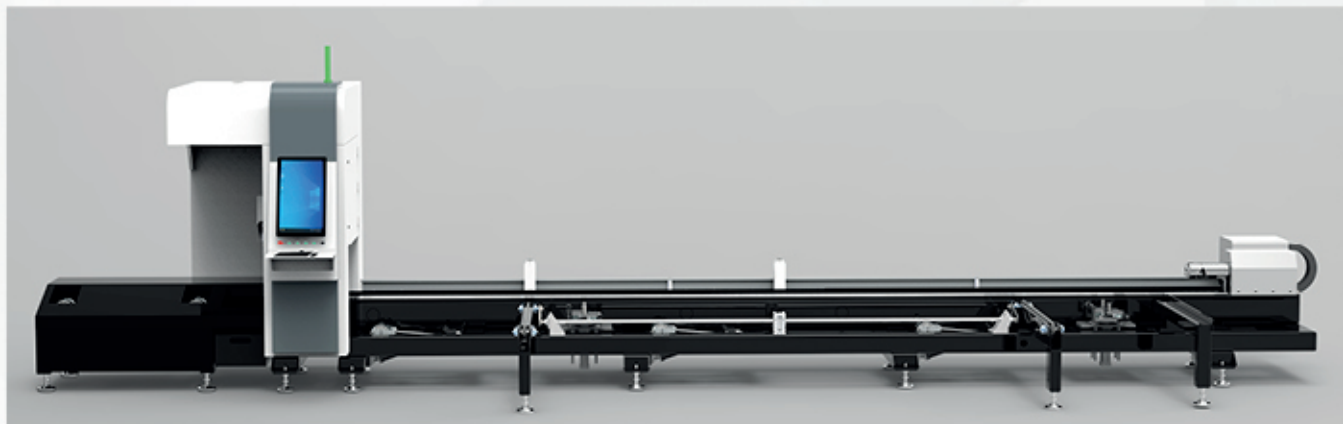
Material	3000W		6000W		12000W		20000W		30000W	
carbon steel	stable cutting	< 18mm	stable cutting	< 22mm	stable cutting	< 35mm	stable cutting	< 45mm	stable cutting	< 60mm
	Limit cut	25mm	Limit cut	30mm	Limit cut	50mm	Limit cut	70mm	Limit cut	80mm
Stainless steel	stable cutting	< 9mm	stable cutting	< 14mm	stable cutting	< 30mm	stable cutting	< 40mm	stable cutting	< 50mm
	Limit cut	12mm	Limit cut	20mm	Limit cut	50mm	Limit cut	80mm	Limit cut	100mm

### Cutting performance





## PIPE LASER CUTTING MACHINE



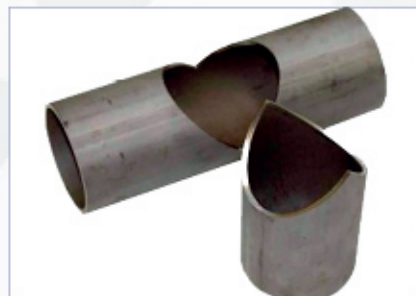
### Features

1. Heavy-duty pneumatic chucks for stable clamping.
2. Maximum clamping diameter: 500mm (Round Tube).
3. Single tube bearing: 3000Kg.
4. Automatic Loading and Unloading System.
5. Optional multiple chucks, four chucks can cut tubes with short tailings and improve material utilization by reverse cutting mode.

### Technical Parameters

Model	DPX-G6016	DPX-G6022	DPX-G6035
Tube Cutting Length	6000 mm		
Tube Diameter Range	10-160 mm	10-220 mm	10-350 mm
Laser Power	3KW/6KW/12KW (Optional)		
Max. Chuck Rotation Speed	140 r/min	120 r/min	80 r/min

### Application



## PLATE & PIPE INTEGRATED LASER CUTTING MACHINE



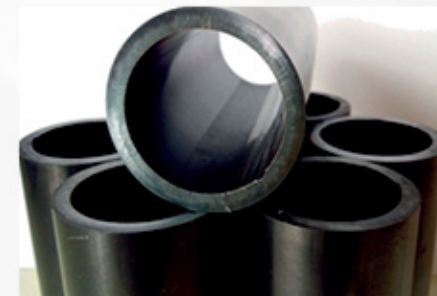
### Features

1. One machine with two uses and Cost-saving.
2. Sheet & tube laser cutting machine can not only cut metal plates, but also metal pipes. It has many uses and can save the space of more than 50%, which effectively improves productivity.
3. The two-way pneumatic chuck tube automatically locates the center, extends the transmission structure to improve stable operation, and increases the jaws to save materials.

### Technical Parameters

Model	DPX-ST3015	DPX-ST4020	DPX-ST6020
Sheet Cutting Range	3000 × 1500 mm	4000 × 2000 mm	6000 × 2000 mm
Tube Diameter Range	10-160 mm / 10-220 mm (Optional)		
Laser Power	3KW/6KW/12KW (Optional)		
Positioning Accuracy	±0.05 mm		
Repeated Positioning Accuracy	±0.03 mm		

### Application





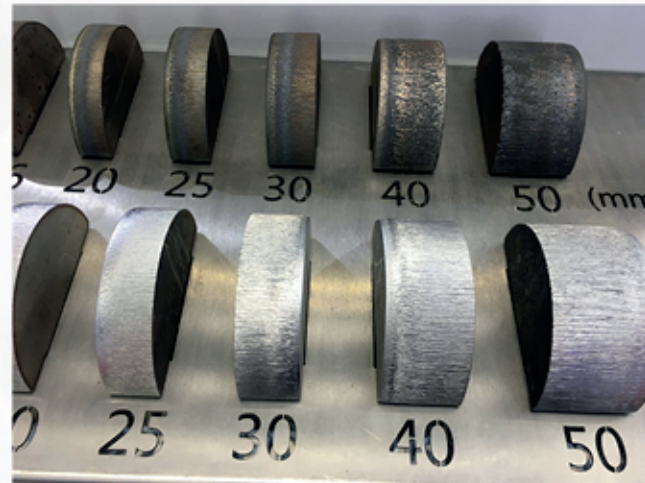
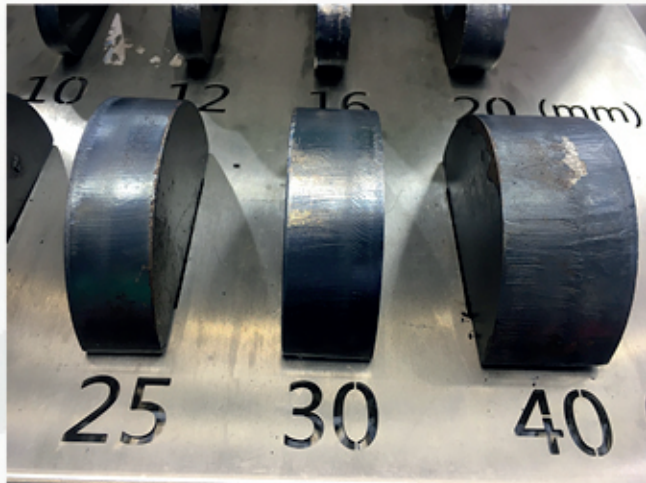
## LARGE FORMAT GROUND-RAIL FIBER LASER CUTTING MACHINE



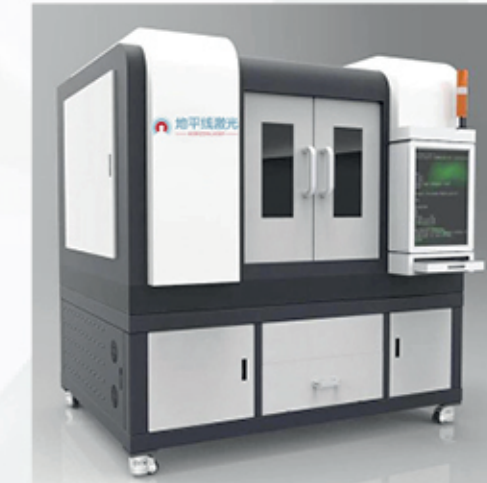
### Technical Parameters

Model	DPX-GR2500	DPX-GR3200	DPX-GR4000
Working Area	12500 × 2550 mm	12500 × 3250 mm	12500 × 4050 mm
Laser Power	6 kW - 60 kW		
Positioning Accuracy	±0.01 mm/m		
Repeated Positioning Accuracy	±0.05 mm		
Max. Running Speed	80 m/min		

### Application



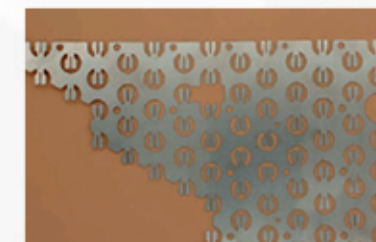
## PRECISION LASER CUTTING MACHINE



### Technical Parameters

Model	DPX-X2030	DPX-X6060	DPX-X6090
Cutting Range	200 × 300 mm	600 × 600 mm	600 × 900 mm
Laser	CW Laser (500-2000W), QCW Laser		
Drive Method	Servo Motor / Linear Motor		
Cutting Accuracy	±0.03 mm		
Positioning Accuracy	±0.01 mm		
Repeated Positioning Accuracy	±0.008 mm		
Application Fields	Jewelry, Eyewear, Hardware, Watches, PCD, Brittle Materials, Aluminum Substrate, Copper Substrate		
Recommended Cutting Thickness	0.1 - 5 mm		

### Application





# FIBER LASER MARKING MACHINE



## Product Introduction

The laser marking machine utilizes a laser beam to engrave characters, patterns, QR codes, and other content on the surfaces of various materials without requiring consumables. The fiber laser marking machine features high power, making it ideal for deep engraving and surface marking on metal components, hardware products, and 3C products. It can also be used for engraving on non-metallic materials such as plastics.

## Advantage

- 1.It uses fiber laser light source, and its life span can reach 100,000 hours.
- 2.Fiber laser marking machines have high power, especially suitable for metal product engraving or deep carving, and can also take into account non-metal product engraving such as plastic materials;
- 3.The device is ready to use upon power-on, with no additional consumables or ongoing usage costs.
- 4.The software supports multiple file formats including PLT, DXF, AI, BMP, and JPG, and enables automatic generation of serial numbers, production dates, barcodes, and QR codes.

## Technical Parameters

Laser Power	20/30/50/100/200W (Optional)
Marking Speed	< 7000 mm/s
Marking Range	110 × 110 mm (@F163) 150 × 150 mm (@F210) 175 × 175 mm (@F254) 200 × 200 mm (@F330)
Marking Precision	Min. Character: 0.2 mm Min. Line Width: 0.03 mm
Cooling Method	Air Cooling
Power Requirement	Voltage: 220V Rated Power: 400-1000W

## Application





# UV LASER MARKING MACHINE



## Product Introduction

The laser marking machine uses a laser beam to engrave characters, patterns, QR codes, and other content on the surfaces of various materials without the need for consumables. The UV laser marking machine employs cold light processing, making it ideal for engraving on plastic products such as ABS, PP, and wires. It is also suitable for marking on surfaces like stone, jade, metal components, and hardware products.

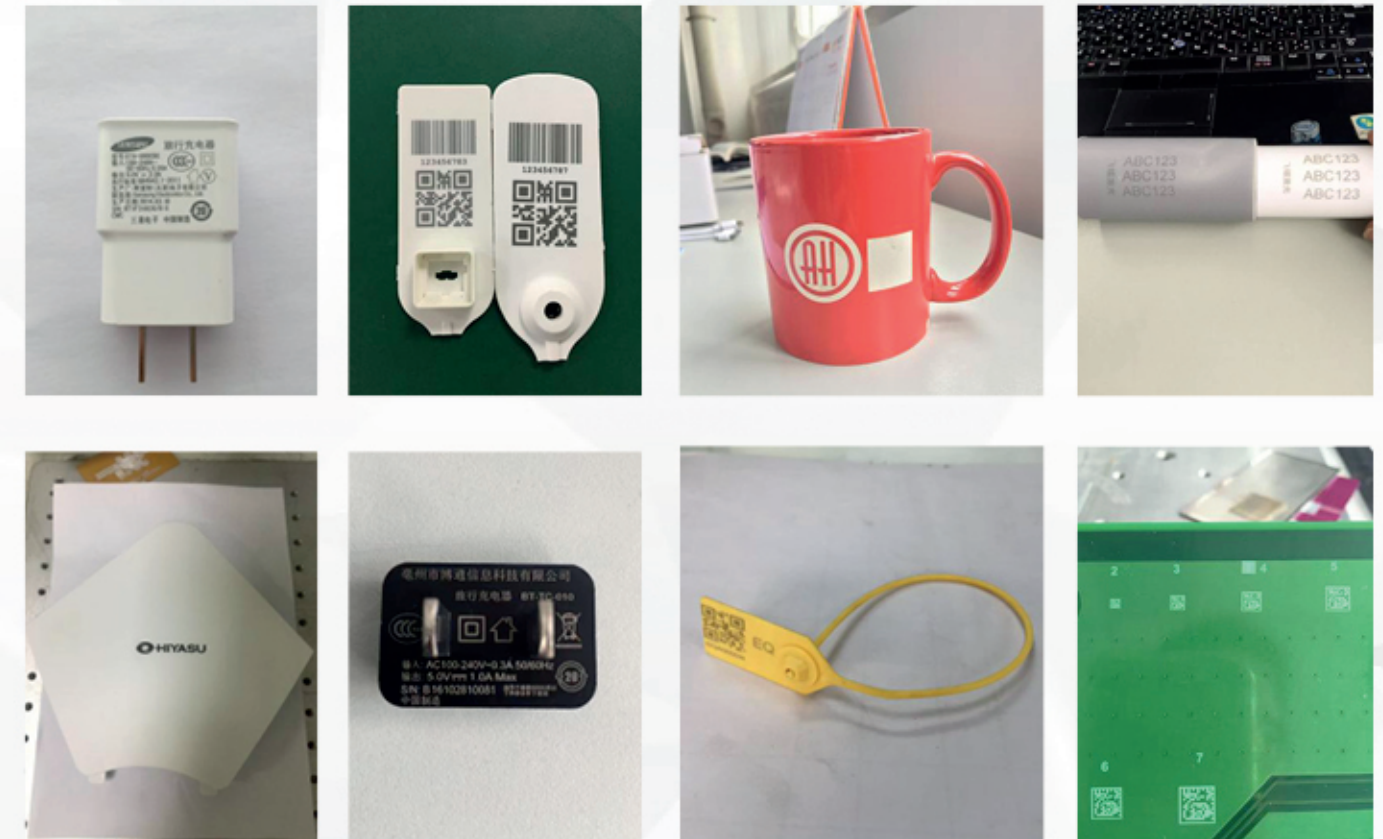
## Advantage

1. Water-cooled laser source ensures stable performance and longer service life.
2. UV laser is a cold light processing technology with minimal heat-affected zones, making it particularly suitable for non-metallic materials such as plastics, leather, packaging, and stone.
3. The device is ready to use upon power-on, with no additional consumables or ongoing usage costs.
4. The software supports multiple file formats including PLT, DXF, AI, BMP, and JPG, and enables automatic generation of serial numbers, production dates, barcodes, and QR codes.

## Technical Parameters

Laser Power	3/5/10W (Optional)
Marking Speed	< 7000 mm/s
Marking Range	110 × 110 mm (@F163) 150 × 150 mm (@F210) 175 × 175 mm (@F254) 200 × 200 mm (@F330)
Marking Precision	Min. Character: 0.2 mm Min. Line Width: 0.03 mm
Cooling Method	Water Cooling
Power Requirement	Voltage: 220V Rated Power: 1.2-1.5 KW

## Application





## HANDHELD LASER MARKING MACHINE



### Product Introduction

The portable laser marking machine integrates air-cooled laser, control system, optical components and lithium batteries, making it light and portable, and can be recharged. For fixed products or large-size products that are not convenient to move, the portable laser marking machine can directly aim at the product for engraving, and can carve characters, patterns, QR codes and other contents for product surfaces of different materials, without consumables. It adopts fiber lasers, which are most suitable for surface engraving of metal parts, engineering machinery, and steel structure products, deep engraving, and can also be engraved on surface engraving of plastic non-metal products.

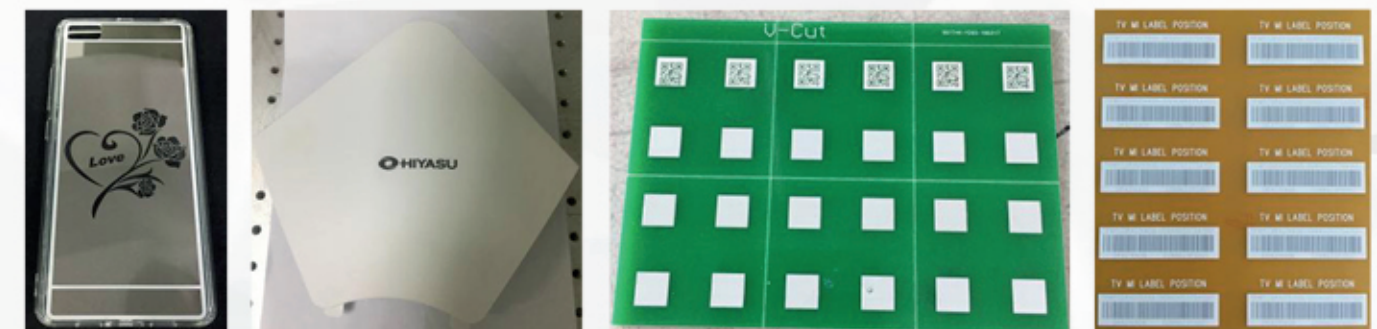
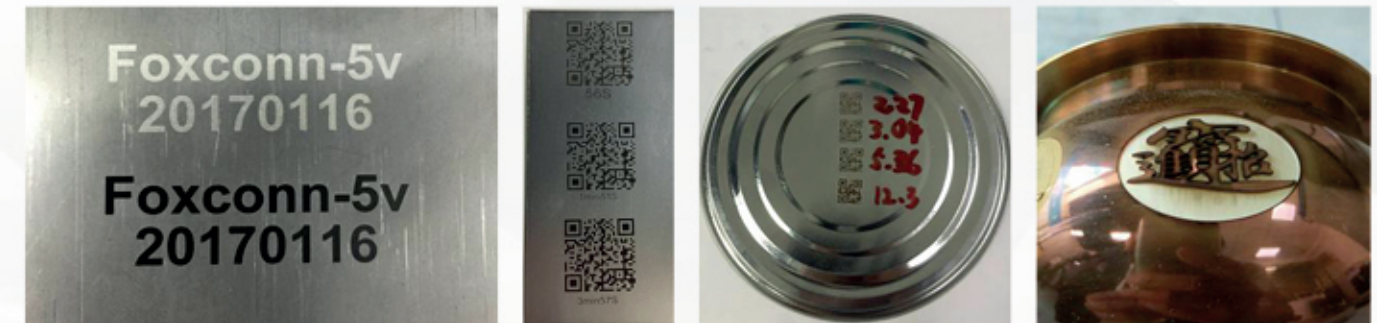
### Advantage

- 1.Fixed height positioning is adopted, without adjusting the focus height.
- 2.Can be equipped with lithium batteries without plug-in operation.
- 3.Fiber laser marking machines have high power, especially suitable for metal product engraving or deep carving, and can also take into account non-metal product engraving such as plastic materials.
- 4.The software supports the import of pattern formats such as PLT, DXF, BMP, JPG, etc., and supports the software interface to arrange serial numbers, production dates, barcodes and QR codes.

### Technical Parameters

Laser Power	20/30/50W (Optional)
Marking Speed	< 7000 mm/s
Marking Range	110 × 110 mm (Customizable)
Marking Precision	Min. Character: 0.2 mm Min. Line Width: 0.03 mm
Battery Standby Time	Approx. 12 hours
Power Requirement	Voltage: 220V Rated Power: 200-300W
Dimensions & Weight	L×W×H: 300×190×260 mm Weight: 7-10.5 kg

### Application





## CCD VISION LASER MARKING MACHINE



### Product Introduction

The visual laser marking machine is a high-precision automation device that combines CCD visual positioning and laser marking technology. Collect product position information in real time, and achieve high-precision positioning and marking under any angle, number, or location incoming materials. It can completely replace labor on the automation equipment of conveyor belts, vibration discs, and XY axis platforms to improve production efficiency.

Vision laser marking machines are suitable for processing occasions such as IC chips, small screws, jewelry, capacitors, cards, etc.

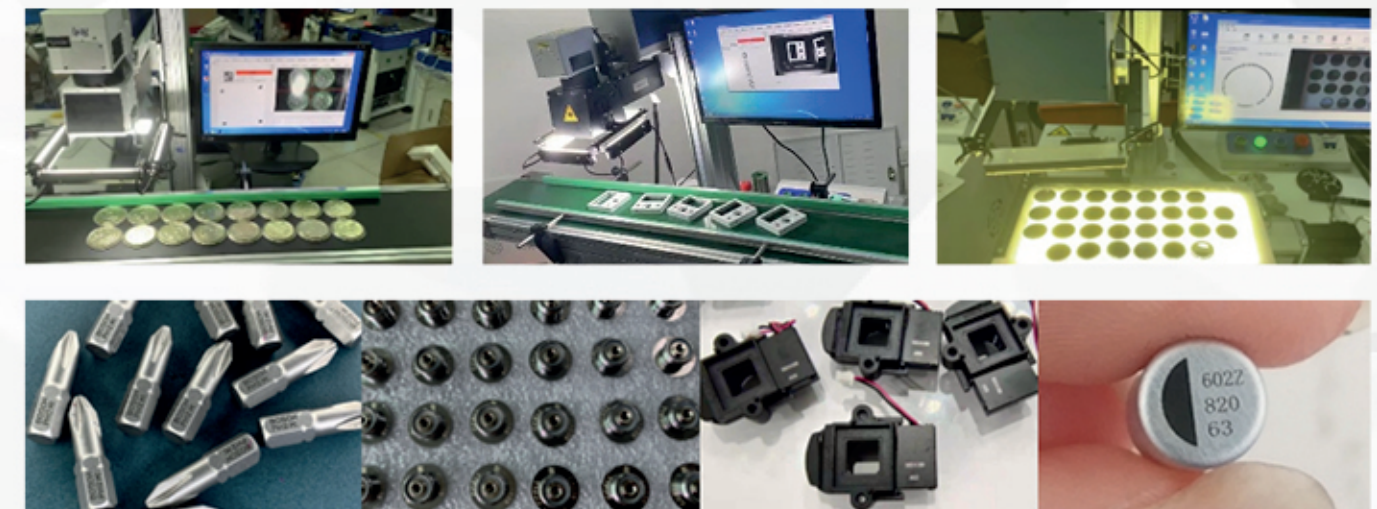
### Advantage

1. Equipped with a high-precision vision positioning system, ensuring accurate positioning and fast response, eliminating the need for fixtures.
2. Regardless of product quantity or incoming angle, the machine can accurately mark at the specified position.
3. Features a dedicated precision synchronous conveyor belt, supporting both step mode and photoelectric sensing mode.
4. Can be integrated with assembly lines or other automatic loading/unloading systems, reducing labor and enabling unmanned automated marking.

### Technical Parameters

Laser Type	Fiber: 20/30/50/100W UV: 3/5/10W
Marking Range	200 mm (110/150/175 mm Optional)
Conveyor Belt	L×W: 1230×260 mm (Customizable)
Vision System	Custom System Recognition Range: 200 mm Hikvision Camera
Power Requirement	Voltage: 220V Rated Power: 600-1700W
Dimensions & Weight	L×W×H: 600×800×1400 mm Weight: < 85 kg

### Application





## FLYING LASER MARKING MACHINE



### Product Introduction

The flying laser marking machine is a high-speed continuous marking machine specially designed to improve productivity. It can be matched with fiber laser, ultraviolet laser or CO<sub>2</sub> laser to achieve marking on metal, plastic, leather, wood and other material products.

### Advantage

- 1.The production line marking speed reaches up to 200 meters per minute (for 2mm high single-line numbers and letters), meeting the marking requirements of high-speed, high-volume applications.
- 2.This model supports automatic encoding, serial numbers, batch numbers, dates, barcodes, QR codes, auto-incrementing numbers, and other functions, catering to the diverse needs of customers across various industries.
- 3.It is primarily used for marking graphics and text such as production dates, expiration dates, batch numbers, shift codes, manufacturer names, and logos in industries including food and beverage packaging, alcoholic beverages, dairy products, garment accessories, leather, electronic components, pharmaceuticals, personal care products, tobacco, and chemical building materials.

### Technical Parameters

Laser Type	Fiber: 20/30/50/100W, UV: 3/5/10W, CO <sub>2</sub> : 30/60W
Marking Speed	Up to 200 m/min (for 2mm high single-line characters)
System	Flying Marking System: Supports auto-encoding, serial numbers, batch numbers, date, barcode, QR code, auto-increment, etc.
Power Requirement	Voltage: 220V, Rated Power: 600-1700W
Dimensions & Weight	L×W×H: 660×510×1460 mm, Weight: < 89 kg
Optional Configurations	Conveyor, Encoder, Sensor

### Application

